

# The Westover - 3 Car

CHARLESTOWNE  
CROSSING



Elevation A



Elevation B



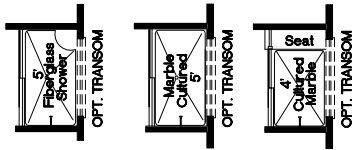
Elevation C



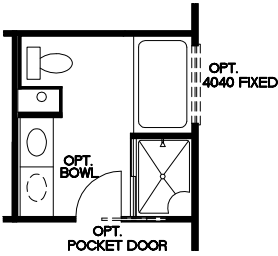
Elevation D

**T.R. HUGHES**  
Homes, LLC

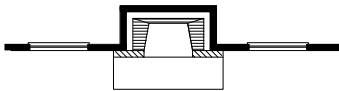
- 2 Story
- 3 Car Garage
- 4 Bedrooms, 2 1/2 Baths, Loft
- 2,244 Square Feet



"A" "B" "C"  
OPT. MSTR. BATH SHOWERS



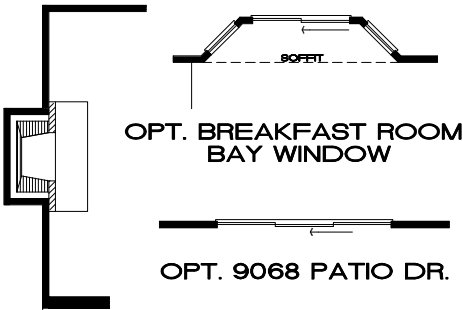
OPT. MSTR. BATH #1



OPT. REAR FIREPLACE



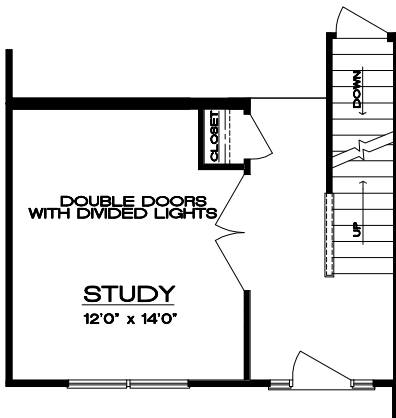
OPT. FAMILY ROOM  
BAY WINDOW



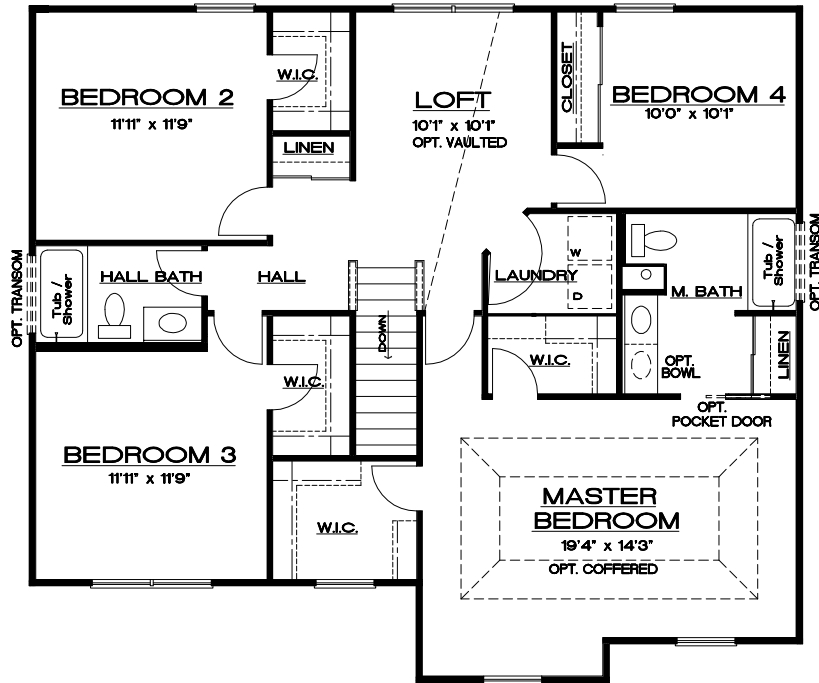
OPT. BREAKFAST ROOM  
BAY WINDOW

OPT. 9068 PATIO DR.

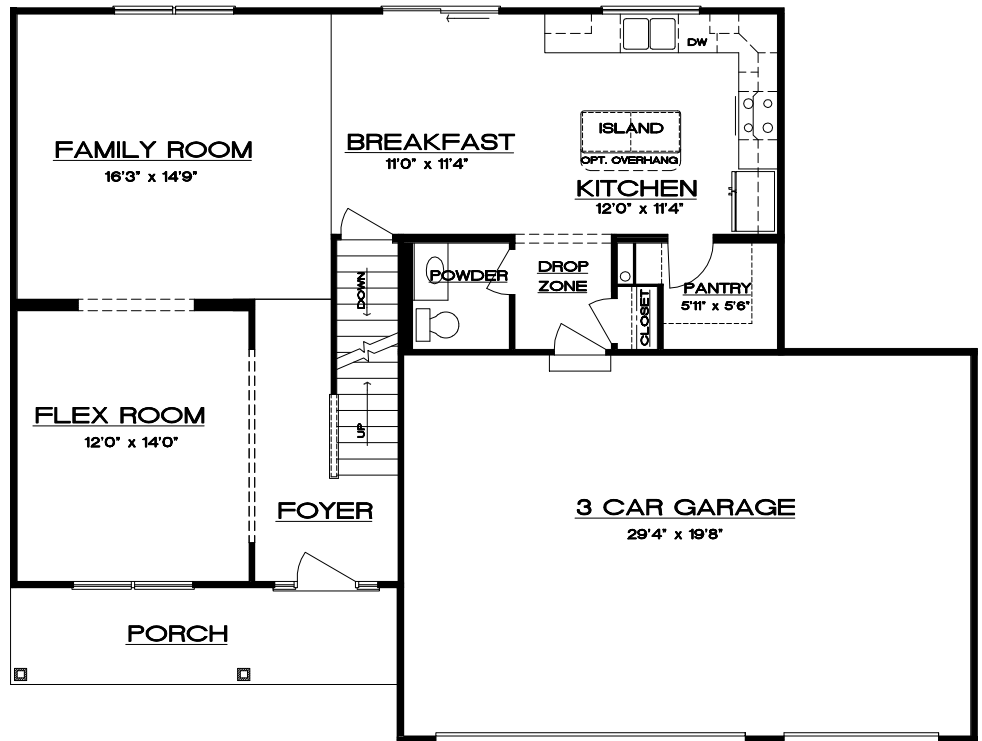
OPT. SIDE FIREPLACE



OPT. STUDY w/ CLOSET



**SECOND FLOOR PLAN**



**FIRST FLOOR PLAN**

Due to evolutionary changes in our Design Process, there may be variations in room dimensions, door swings, and window and door locations. We reserve the right to substitute materials of comparable quality. 10/8/2015